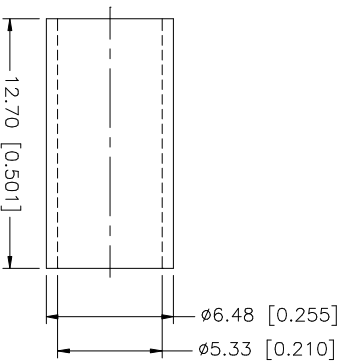
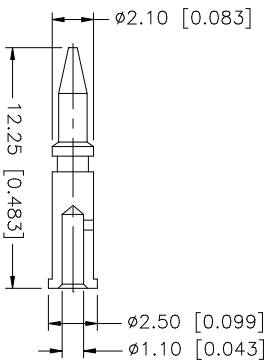
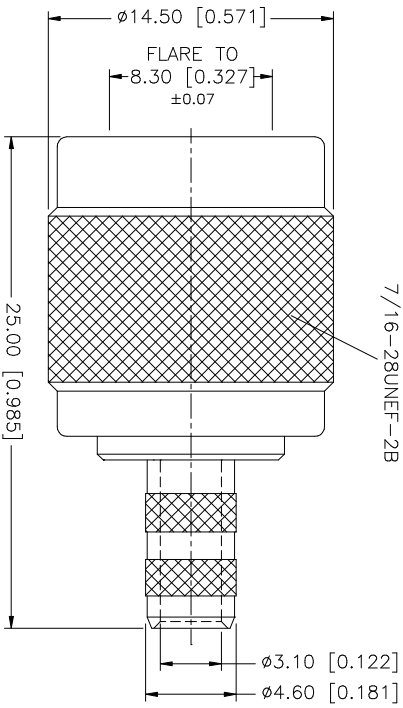
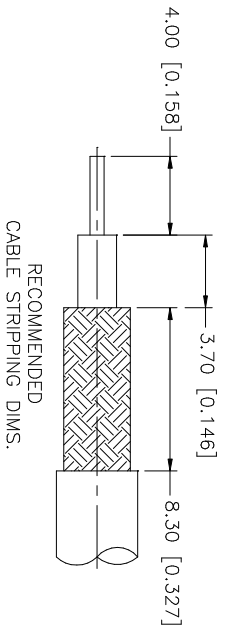


REV.	DATE	DESCRIPTION
A	12/23/02	MODIFY CONTACT PIN LENGTH



NOTE:

1. CRIMPED FERRULE
HEX CRIMP SIZE .213"
2. CRIMPED CONTACT PIN
HEX CRIMP SIZE .068"

QTY	DESCRIPTION	MATERIAL	FINISH	FINISH	QTY	DO NOT SCALE DRAWING	CAD FILE	DWG. NO.	REV.	SIZE	SCALE
							C:/122/122108.DWG	122108.DWG	A	A	NA
1	DESCRIPTION	MATERIAL	FINISH	FINISH	QTY	DO NOT SCALE DRAWING	CAD FILE	DWG. NO.	REV.	SIZE	SCALE
1	FERRULE	BRASS	NICKEL	NICKEL	1	UNLESS OTHERWISE SPECIFIED DIMENSIONS ARE IN INCHES UNLESS DIMENSIONS IN [] ARE IN MILLIMETERS DIMENSIONS IN [] ARE IN INCHES AND FOR CUSTOMER REFERENCE ONLY.	C:/122/122108.DWG	122108.DWG	A	A	NA
1	GASKET	RUBBER	RED	RED	1	UNLESS OTHERWISE SPECIFIED TOLERANCES FOR ALL DIMENSIONS ARE:					
1	INSULATOR	DELIRIN	NATURAL	NATURAL	1	0.5 - 8mm ± 0.20mm					
1	CONTACT PIN	BRASS	GOLD	GOLD	1	8 - 30mm ± 0.40mm					
1	SHELL/BODY	BRASS	NICKEL	NICKEL	1	30 - 120mm ± 0.50mm					
						UNLESS OTHERWISE SPECIFIED TOLERANCES FOR INCHES ARE:					
						.020 - .315 = ± 0.007"					
						.315 - 1.180 = ± 0.015"					
						1.180 - 4.724 = ± 0.020"					

Amphenol Connex

PART DESCRIPTION
TNC STRAIGHT CRIMP PLUG-CAPTIVE CONTACT
 (FOR RG-58/U CABLE)

PART NO. 122108